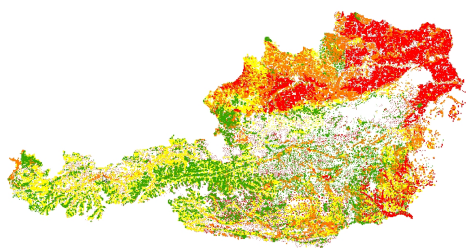


Share of arable crops (%)



CAPRI comprises a spatial downscaling component to 1 x 1 km grid cell clusters for environmental impact analysis – the map shows an example for Austria

Background

of CAPRI RD

The Common Agricultural Policy is under constant development to meet the expectations of society linked to the multifunctional model of European agriculture. Tools such as the ‘CAPRI’ modelling system support rational policy design at European, national and regional level, help to link the European research community to policy makers, to inform the public regarding future developments in agriculture, and to analyze possible outcomes of changes in the Common Agricultural Policy.

Since 1999, when the first operational version of the ‘CAPRI’ modeling system was available, a network of European researchers has constantly kept the tool up-to-date, improved and applied it to policy analysis. Many of these activities were made possible by funds provided by the EU framework programs.

The CAPRI-RD project, supported again by the EU, will help to maintain, extend and apply ‘CAPRI’ as an important tool for agricultural policy impact analysis with a focus on rural development.

Partners

In CAPRI RD

University Bonn
Institute for Food and Resource Economics
Bonn, Germany

Joint Research Centre
Institute for Environment and Sustainability
Ispra, Italy

LEI Wageningen-UR
The Hague, The Netherlands

Middle East Technical University
Department of Economics
Ankara, Turkey

Joint Research Centre
Institute for Prospective Studies
Seville, Spain

Von Thuenen Institute
Braunschweig, Germany

University of Helsinki
Ruralia Institute
Helsinki, Finland

University of Ljubljana, Biotechnical Faculty
Chair for Agricultural Economics, Policy and Law
Ljubljana, Slovenia

Institute for European Environmental Policy
London, U.K.

University of Gloucestershire
Countryside and Community Research Unit
Cheltenham U.K.

Disclaimer: Although this describes an EU-funded project, it does not necessarily reflect the European Commission's views.



Project officer:
Lucas Janssen

lucas.janssen@ec.europa.eu



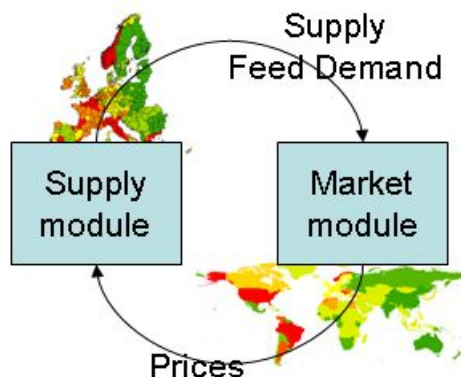
Common Agricultural Policy
Regionalised Impact
- The Rural Development Dimension

Collaborative project
Small to medium-scale focused research project
project No.: 226195
3/2009-3/2012



http://www.ilar1.uni-bonn.de/agpo/rsrch/capri-rd/capri_rd_e.htm

Modules in the CAPRI modeling system



What is CAPRI?

CAPRI is the acronym for "Common Agricultural Policy Regional Impact", a "multi-purpose" economic modeling system for EU's agriculture which allows analysing:

- Market policies (administrative prices/tariffs/preferential agreements, subsidized exports)
- Premium systems/quotas/set-aside regimes
- Environmental policies
- Changes in exogenous drivers (population/inflation/exchange rates/consumption behavior/technical progress)

Regarding:

- Supply/demand/trade flows at global scale
- Hectares/herd sizes/yields/input use, income and environmental indicators at regional level
- Producer & consumer prices, welfare and budget effects at Member State level

CAPRI has been developed since 1997, with support by the EU commission. Important applications were:

- the Agenda 2000 reform package of the CAP (1999)
- the MTR reform package of the CAP (2002)
- possible outcomes of the WTO Doha round (2003)
- the Luxembourg Compromise of the CAP (2003)
- sugar market reform (2005)
- dairy reform (2008)

Objectives

of CAPRI RD

Expansion of CAPRI to all Candidate and Potential Candidate Countries

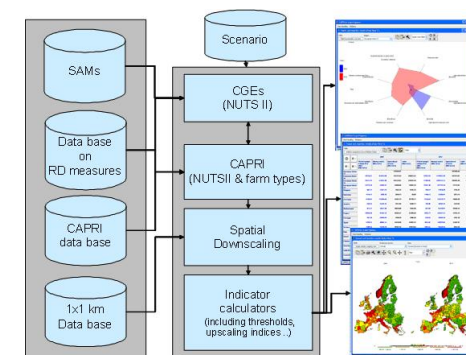
Extension of policy coverage to rural development measures using a linked layer of regional Computable General Equilibrium (CGE) models

Systematic data base on rural development policies of the Common Agricultural Policy, linked to CAPRI and the regional CGEs

Development and integration of indicators relating to rural development

Regular reference run and scenario work in close co-operation with stakeholders

Components in CAPRI-RD



Expected Results

of CAPRI RD

An improved operational up-to-date and validated CAPRI modeling system, extended by regional CGEs, for ex-ante analysis of both pillars of the CAP regarding the multi-functional role of agriculture

A network of European researchers applying and maintaining CAPRI

Regular support of DG-AGRI in policy Impact analysis, focusing on Rural Development

Scientific findings regarding the design of large-scale agricultural modeling systems and in linking on a Europe wide scale partial and general equilibrium models

Coordination



Institute for Food and Resource Economics

Wolfgang Britz
Nussallee 21

D-53115 Bonn, Germany

++49-(0)-228-73 25 02

wolfgang.britz@ilr.uni-bonn.de